



# Stereo-Defined Scaffold Strategy for Tamoxifens from (*E*)-1-Bromo-2-iodoalkenes.

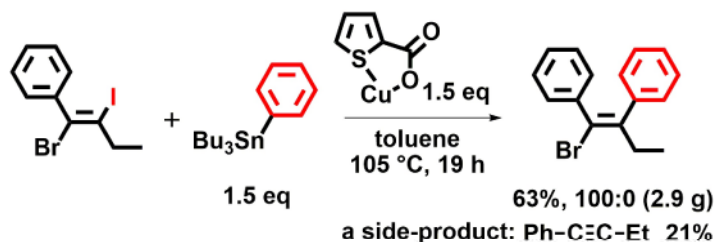
Yoshino Fujii, Tetsuo. Iwasawa\*

Department of Materials Chemistry, Ryukoku University, Seta, Otsu, Shiga 520-2194, Japan

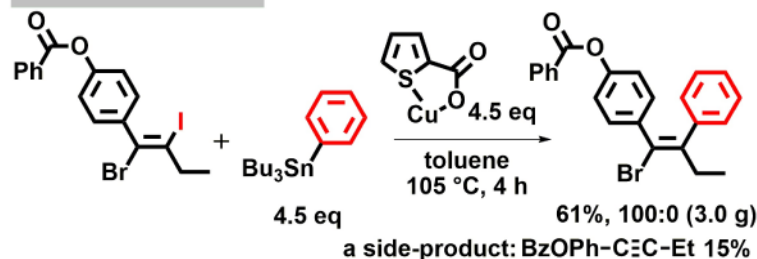


**1. Key Reactions:** Fujii, Y.; Tamura, Y.; Hashimoto, N.; Endo, N.; Iwasawa, T. *ChemistrySelect* 2019, 4, (9), 2721-2725.

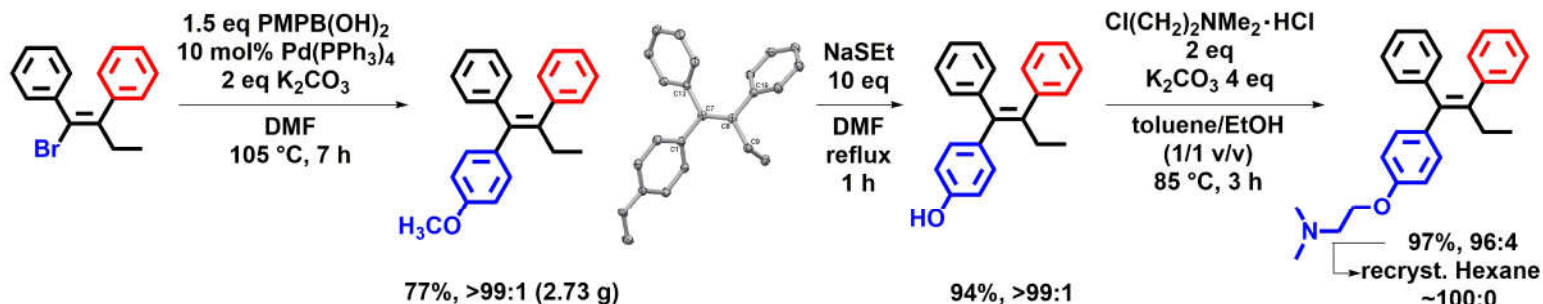
**For (*E*)-Tamoxifen**



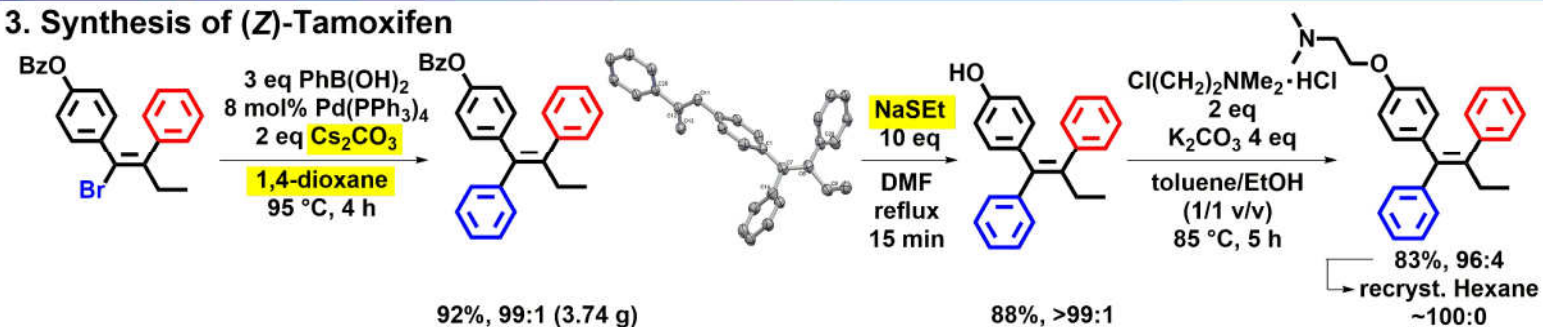
**For (*Z*)-Tamoxifen**



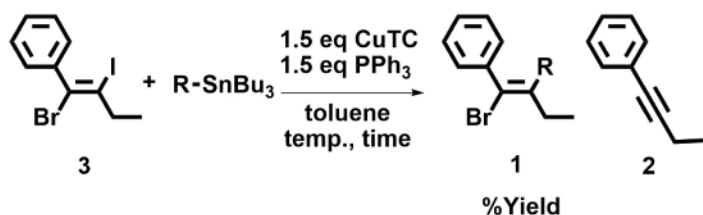
## 2. Synthesis of (*E*)-Tamoxifen



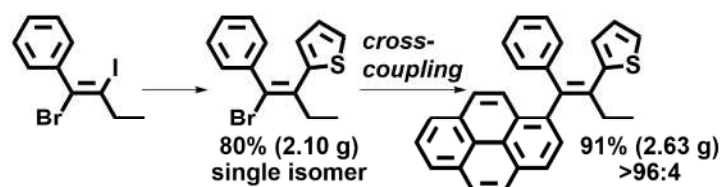
## 3. Synthesis of (*Z*)-Tamoxifen



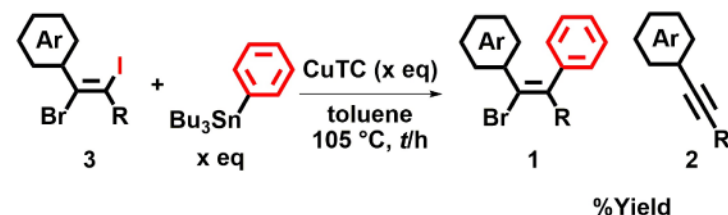
## 4. Background: Endo, N.; Iwasawa, T. *Tetrahedron* 2017, 73, 5833-40.



R	temp./°C	time/h	%Yield		
			1	2	3
	90	2	80	trace	0
	110	20	51	10	4
	90	11	<10	-	-
	90	23	0	-	-



## 5. Influence of aromatic rings



Ar	R	x/eq	t/h	%Yield		
				1	2	3
		1.5	4.5	0	60	8
		4.5	2	61	19	19
		1.5	4	40	36	21
		1.5	9	~0	79	0