



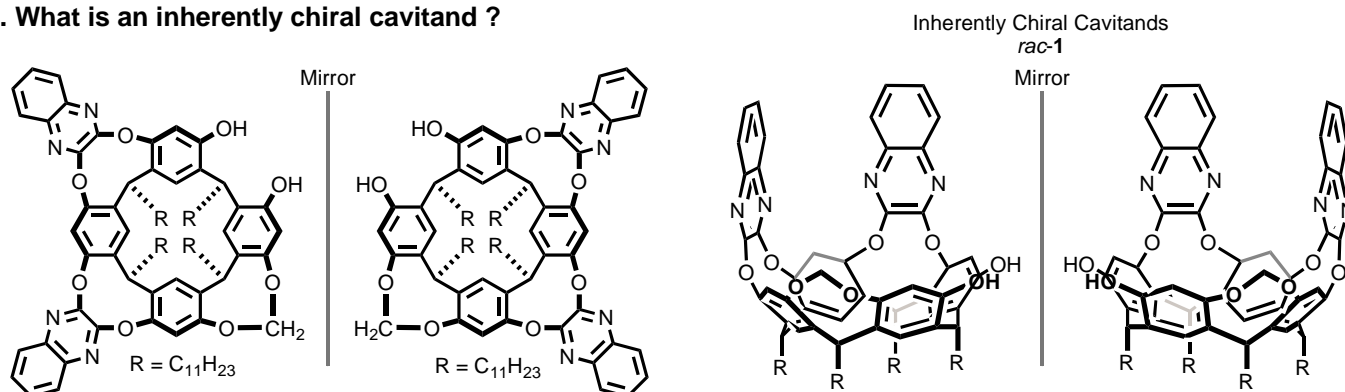
# Inherently Chiral Cavittand Curvature: Diastereoselective Oxidation of Cavittands Tethered to Allylsilanes



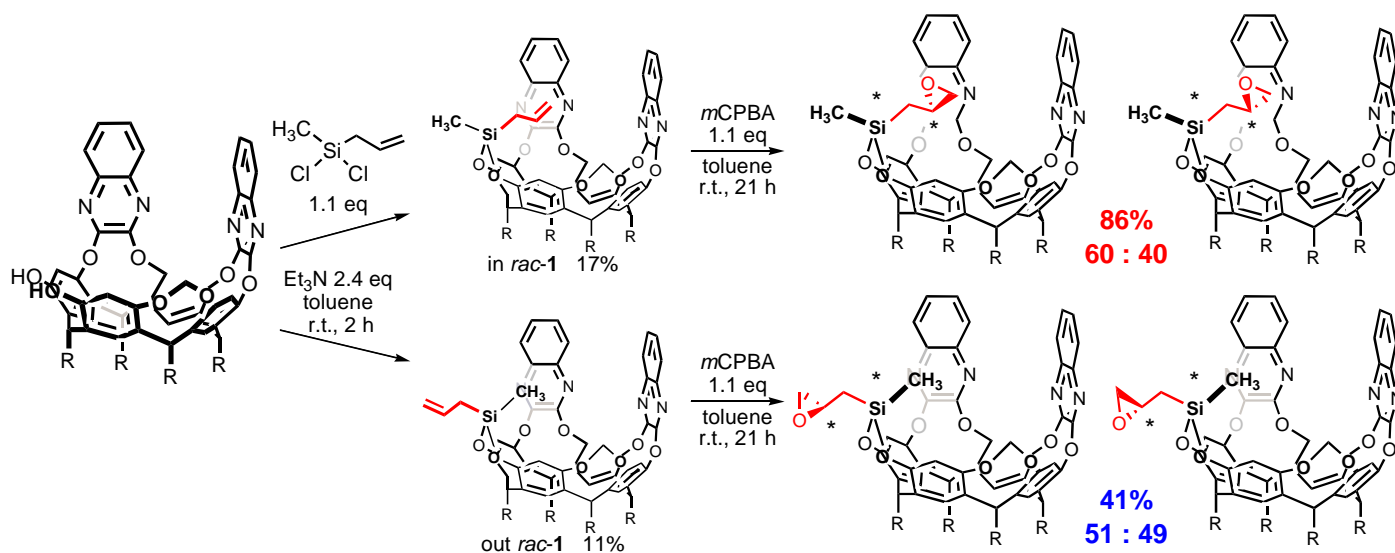
Yasuhiro Matsumoto, Mami Inoue, Yoshino Fuji, Tetsuo Iwasawa\*

Department of Materials Chemistry, Ryukoku University, Seta, Otsu, Shiga 520-2194, Japan

## 1. What is an inherently chiral cavittand ?



## 2. Synthesis M. Inoue, Y. Fujii, Y. Matsumoto, M. P. Schramm, T. Iwasawa, *Eur. J. Org. Chem.* 2019, 34, 5862-5874.



## 3. Epoxidation reactions of allyl silane cavittands

