



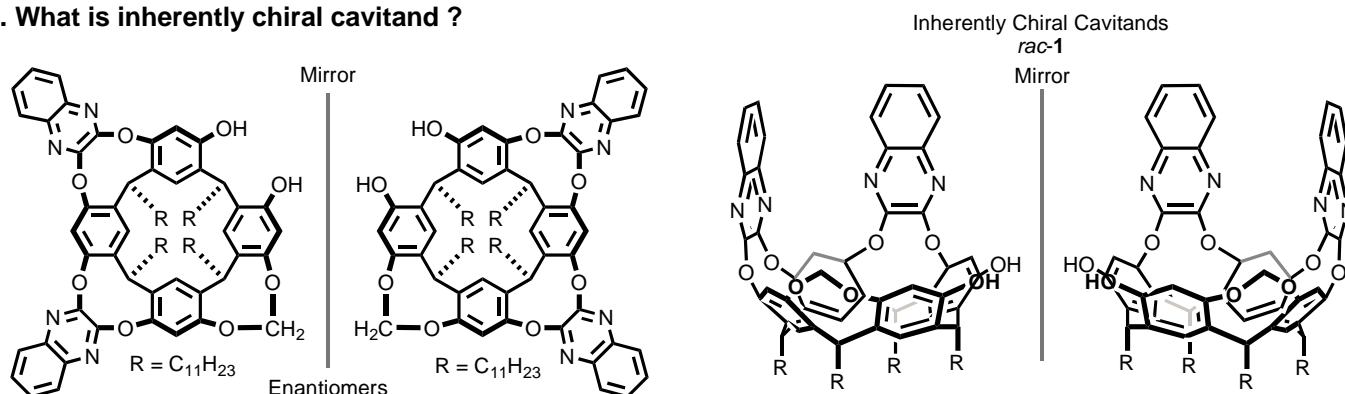
Inherently Chiral Cavittand Curvature: Diastereoselective Oxidation of Tethered Allylsilanes



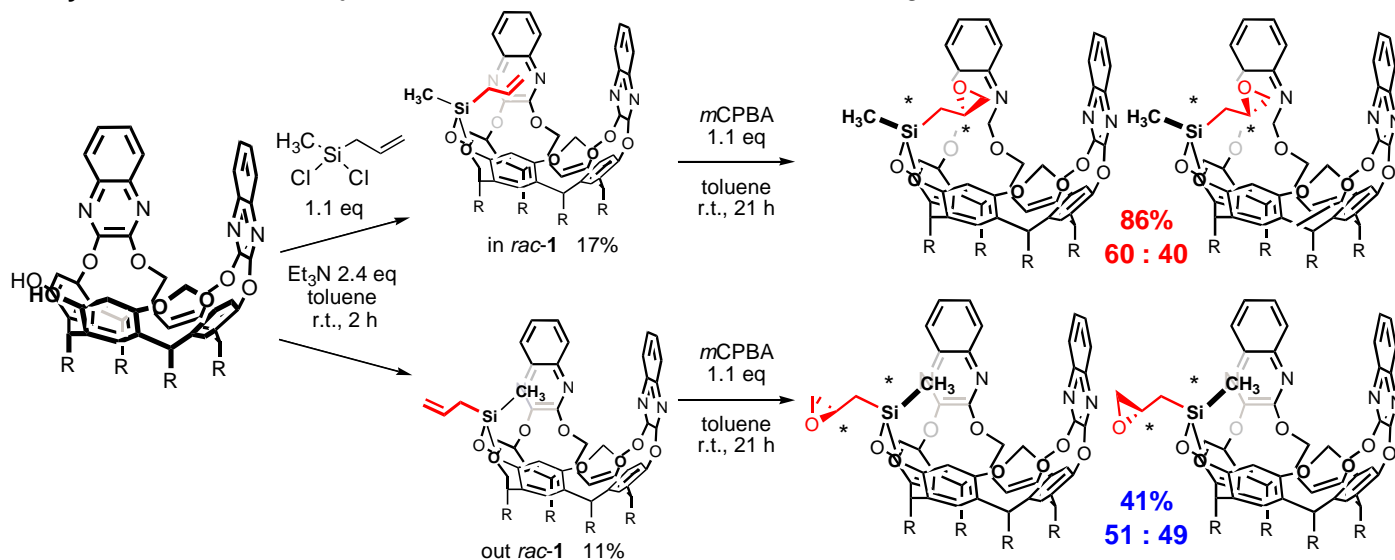
Mami Inoue, Tetsuo Iwasawa*

Department of Materials Chemistry, Ryukoku University, Seta, Otsu, Shiga 520-2194, Japan

1. What is inherently chiral cavittand ?



2. Synthesis M. Inoue, Y. Fujii, Y. Matsumoto, M. P. Schramm, T. Iwasawa, *Eur. J. Org. Chem.* 2019, submitted.



3. Epoxidation of allyl silane cavittands

