



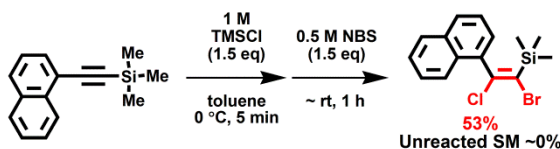
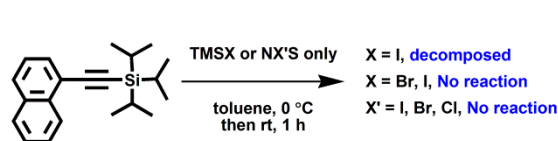
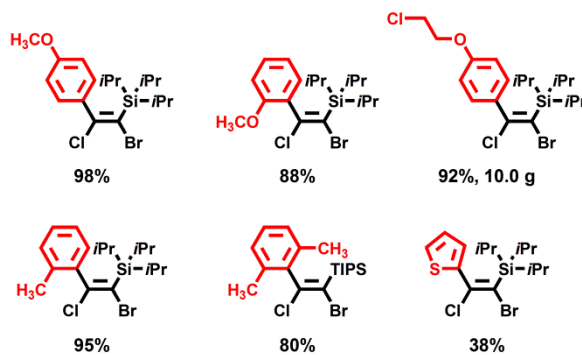
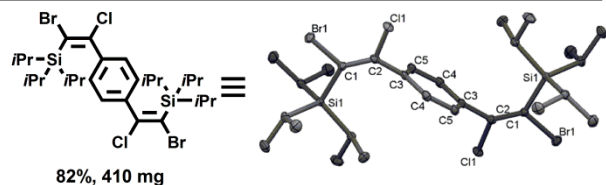
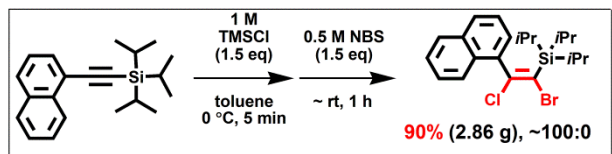
Regio- and Stereoselective Synthesis of Vicinal (Z)-Dihaloalkenyl Silanes through *in situ* generated BrCl



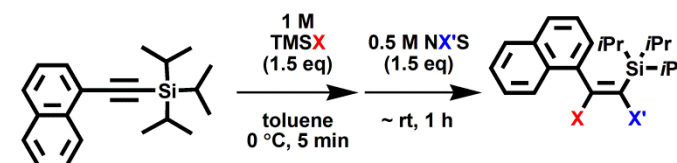
Masataka Ide, Tetsuo Iwasawa

Department of Materials Chemistry, Ryukoku University, Seta, Otsu, Shiga 520-2194, Japan

1. Summary a) Yauchi, Y.; Ide, M.; Shiogai, R.; Chikugo, T.; Iwasawa, T. *Eur. J. Org. Chem.* 2015, 938-943.
b) Japanese Patent No. 2014-247030

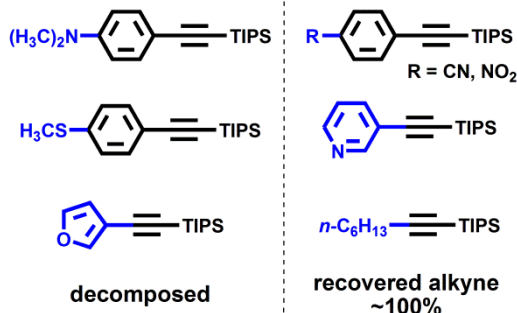


6. Halogen sources

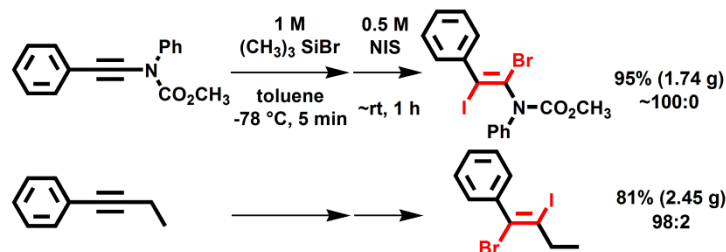


| X | X' | Yield (%) | Recovered SM (%) | Product (X/X') |
|----|----|-----------|------------------|----------------|
| I | I | - | ~100 | - |
| I | Br | 78 | 15 | BrBr |
| I | Cl | 26 | 73 | - |
| Br | I | 97 | 0 | BrBr |
| Br | Br | 85 | 0 | BrBr |
| Br | Cl | 71 | 0 | BrBr |
| Cl | I | 63 | 26 | - |
| Cl | Br | 95 | 0 | ClBr |
| Cl | Cl | 75 | 2 | ClCl |

2. Limitation

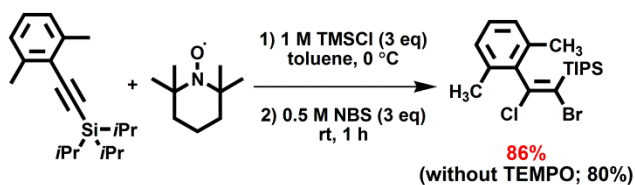


3. Background

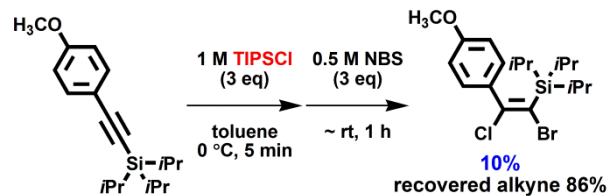


1. Ide, M.; Yauchi, Y.; Iwasawa, T. *Eur. J. Org. Chem.* 2014, 3262-3267.
2. Ide, M.; Yauchi, Y.; Shiogai, R.; Iwasawa, T. *Tetrahedron* 2014, 70, 8532-8538.

4. Radical process?



5. TIPS-Cl doesn't work



7. *in situ* BrCl

